

CNCED SERIES - SINGLE DECK ELECTRIC CONVECTION OVENS



Intertek

▶ STANDARD FEATURES

- Stainless steel front, sides and top.
- Painted legs.
- Independently operated stainless steel doors with double pane windows.
- 29"W x 22"D x 20"H, Interior Measurement
- 1/2 H.P. two speed oven blower-motor.
- Oven cool switch for rapid cool down.
- Porcelain enamel on steel oven interior Measures 29" w x 22" x 20h.
- Four nickel plated oven racks with eleven rack Positions 28" x 21".
- One year limited parts and labor warranty.

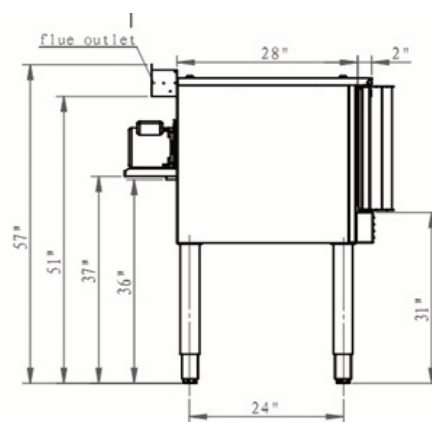
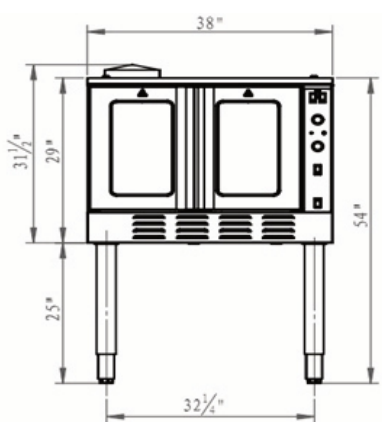
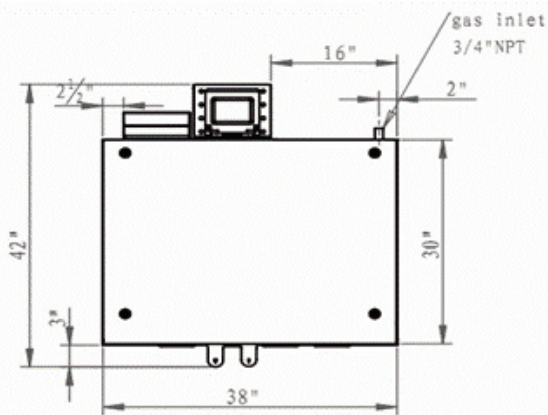
▶ CNCED

Solid state temperature controls adjust from 150° to 500°F. 60 minute timer with audible alarm.

▶ CNCED







- USA Made

Computer controls with digital time and temperature readouts. 99-hour timer with audible alarm. Roast and Hold cycle. One hundred programmable menu selections.



TOTAL HEAT POWER	VOLTAGE	1 PHASE	3 PHASE
10kW	208V	53A	31A
10kW	240V	46A	27A

▶ PRODUCT SPECIFICATIONS:

 MODEL NO CNCED	 WIDTH 38	 DEPTH 42	 HEIGHT 57
 TOTAL 10 KW	 ELECTRICAL 120/60/1	WEIGHT WITH SKID & PACKAGING 480/LBS. 218/KG	WEIGHT WITHOUT SKID & PACKAGING 427/LBS. 194/KG

▶ ACCESSORIES

- Stainless steel open stand with adjustable rack supports,
- stainless steel shelf and choice of adjustable feet or casters.
- Extra oven rack(s).
- Rack hanger.
- Stainless steel drip pan.

▶ OPTIONS

- Complete prison package.
- Security screws only.
- Stainless steel legs.
- Casters.
- Second year extended limited parts and labor warranty



Connerton reserves the right, without notice, to make changes and revisions in product specifications, materials and design, which in our opinion will provide better performance, durability and efficiency.