

CNCGD SERIES - SINGLE DECK GAS CONVECTION OVENS



Intertek

▶ STANDARD FEATURES

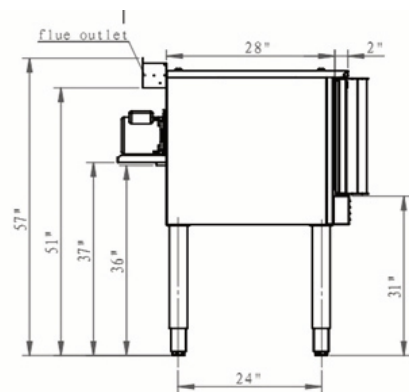
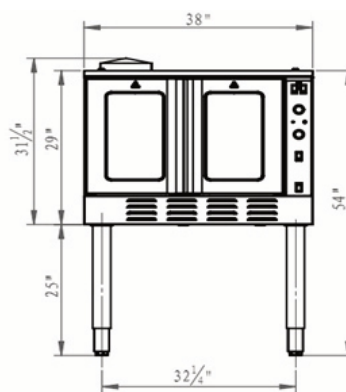
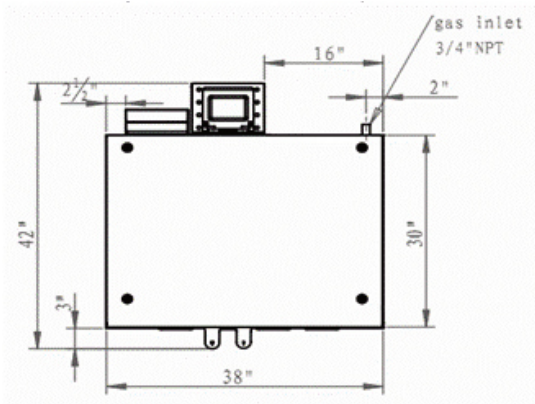
- Stainless steel front, sides and top.
- 29"W x 22"D x 20"H Interior Measurement And Painted legs.
- Independently operated stainless steel doors with double pane windows.
- 120V/60HZ, 1 ph power supply required
- 1/2 H.P. two speed oven blower-motor.
- Oven cool switch for rapid cool down.
- Porcelain enamel on steel oven interior.
- Four nickel plated oven racks with eleven rack positions.
- One year limited parts and labor warranty.

▶ CNCGD

Solid state temperature controls adjust from 150° to 500°F. 60 minute timer with audible alarm.

▶ CNCGD

- USA Made
- Computer controls with digital time and temperature readouts. 99-hour timer with audible alarm. Roast and Hold cycle. One hundred programmable menu selections.



▶ PRODUCT SPECIFICATIONS:

 MODEL NO CNCG	 WIDTH 38	 DEPTH 42	 HEIGHT 57
 BTU/HR. PER OVEN 54,000	WEIGHT WITH SKID & PACKAGING 480/LBS. 218/KG		WEIGHT WITHOUT SKID & PACKAGING 427/LBS. 194/KG

▶ ACCESSORIES

- Stainless steel open stand with adjustable rack supports,
- stainless steel shelf and choice of adjustable feet or casters.
- Extra oven rack(s).
- Rack hanger.
- Stainless steel drip pan.
- Flexible gas hose with quick disconnect and restraining device.
- Consult price book for available sizes.

▶ OPTIONS

- Kosher friendly control package.
- Complete prison package.
- Security screws only.
- Stainless steel legs.
- Casters.
- 208V or 240V, 60 Hz, 1 ph, two speed, 1/2 H.P. blower motor.
- 208V, 4.2 amps; 240V, 3.6 amps.
- Second year extended limited parts and labor warranty

▶ INSTALLATION INSTRUCTIONS

01. A combination gas pressure regulator and safety solenoid system is included in this unit. Natural gas is 4.0" W.C., Propane gas is 11.0" W.C.
02. An adequate ventilation system is required for commercial cooking equipment. Information may be obtained by writing to the National Fire Protection Association, Batterymarch Park, Quincy, MA 02289. When writing, refer to NFPA No. 96.
03. These units are manufactured for installation in accordance with ANSZ223.1 (latest edition), National Fuel Gas Code. Copies may be obtained from American Gas Association Inc., Accredited Standards Committee Z223, 400 N. Capitol St. NW, Washington, DC 20001 or the Secretary Standards Council, NFPA, 1 Batterymarch Park, Quincy, MA 02169-7471.
04. Clearances:

	Combustible	Non-combustible
Rear	6"	6"
Right Side	6"	0"
Left Side	6"	0"
05. This appliance is manufactured for commercial installation only and is not intended for home use.



Connerton reserves the right, without notice, to make changes and revisions in product specifications, materials and design, which in our opinion will provide better performance, durability and efficiency.